

**TECDIS 2424**  
All-in-one solution

**FURUNO NORGE**

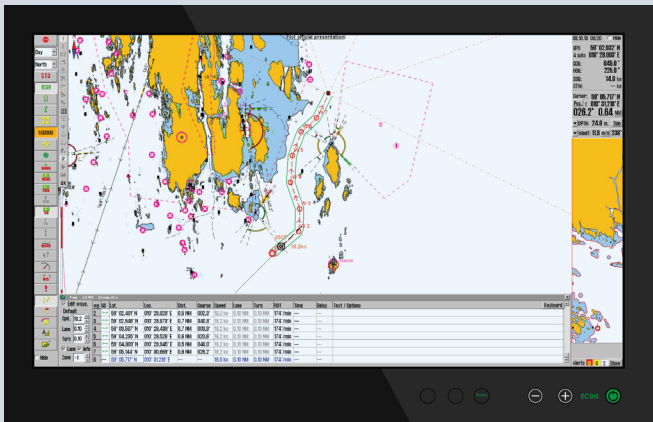
**TECDIS increases your safety while reducing your costs. TECDIS is developed based on extensive experience from users onboard fishing vessels, offshore vessels and deep sea merchant vessels. With the new TECDIS 2424 you can now get the TECDIS experience in a gorgeous 24 inch widescreen panel computer, perfect for retrofit installation.**

## TECDIS at a glance

TECDIS is a powerful tool for safe and user friendly navigation. Important features are a powerful route planning tool, Navtex integration, mini-conning, tracks, vetting and weather overlay (optional)

## User friendly

TECDIS is developed in close collaboration with its users, ensuring a feature-rich yet highly user friendly ECDIS. The system allows for multiple chart display setups, and each navigator can tailor TECDIS to their own use. Experience has shown that the migration to paperless navigation is as easy as 1-2-3 with TECDIS.

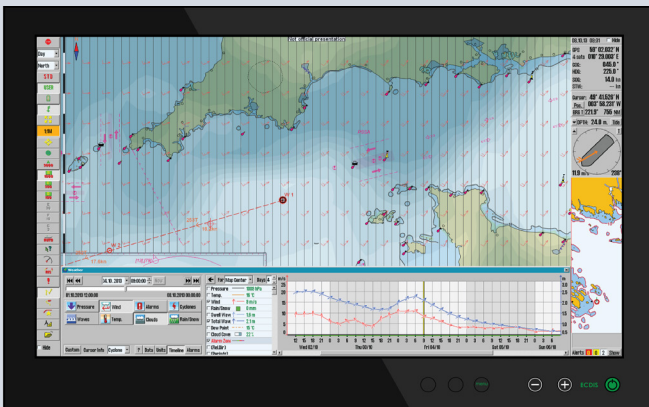


## Futureproof

With TECDIS, we update the software continuously, and release software updates free of charge to all TECDIS users. Software upgrades when a new ECDIS performance standard is issued. This means that your TECDIS 2424 installation can be used with the best available software throughout the hardware lifespan.

## Best in class

TECDIS is best in class when it comes to integrating additional content from the chart suppliers. Services offered include the Jeppesen T&P notice service, Piracy Overlay, Weather Overlay, and Routing. The team behind TECDIS is also participating in research projects, developing innovative new features for safer and greener shipping.

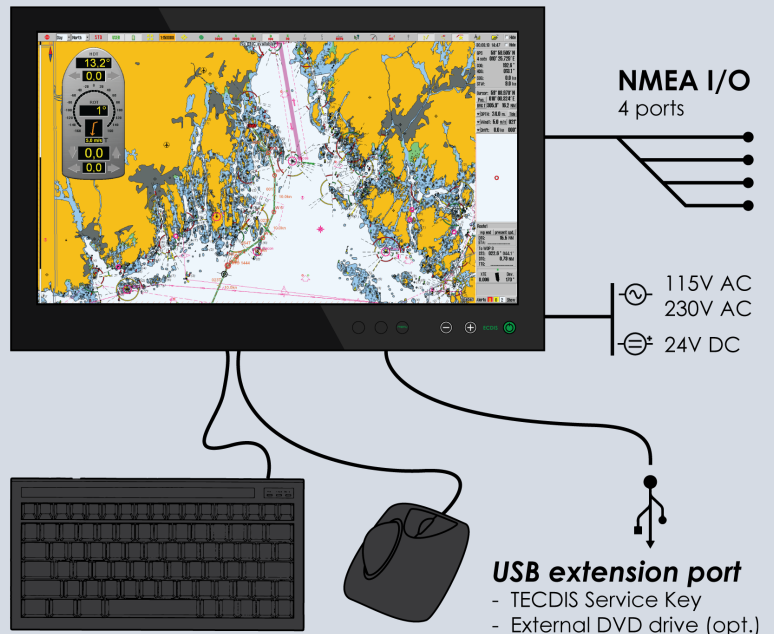


## Painless paperless navigation

With TECDIS 2424 you get the powerful TECDIS system, only now in one single unit. Combining the screen and processing unit in one cabinet, now all you have to accommodate is the 24 inch widescreen monitor. This is perfect for retrofit installation. Additionally, the integrated multi-power supply allows the use of both AC and DC current. With a dual TECDIS installation with ENC charts, the vessel can now discard paper charts.

## ENC made easy

Full integration of Jeppesen C-Map charts and support for NAVTOR Navstick and charts means that having updated charts is easier than ever before. Chart data from different sources is combined, providing real-time world-wide coverage. Jeppesen's *FlatFee* and *Dynamic Licensing*, and NAVTOR's *Pay As You Sail* are all available, giving you the best options for sailing with predictable costs.



## Features of TECDIS 2424

- Automatic chart update via internet or e-mail
- Dynamic Licensing
- Easy voyage planning, with main and alternative routes
- Automatic anti-grounding system with selectable safety depth
- AIS and ARPA interface
- Advanced sensor filters
- Weather Routing
- Storage of tracks, symbols, objects and log files
- Advanced chart alarms with various settings
- Advanced user interface for chart presentation
- Advanced conning/docking pictures
- Automatic voyage replay
- C-routes, automatic route generation within 5 sec.
- Tidal currents etc.
- Low cost TECDIS

## Computer with integrated monitor HD 24T21 MEC

- Compact high end industrial computer with integrated monitor and Microsoft Windows 7
- Intel Celeron P4505 - 1.86 GHz
- Intel HD Graphics (integrated graphics processor)
- 2GB RAM
- HD SSD 80GB 2,5" Hard drive
- 4x USB (1x USB 1.1, 3x USB 2.0) ports
- Standard PS/2 (Keyboard and mouse)
- 4 ports optoisolated RS-422/485 serial interface via USB(internal), Phoenix 5pin ports
- 1x RS-232 serial port & 1x RS-422/485 serial port
  
- 24 inch viewable image size
- MVA (Multi-domain Vertical Alignment) Active matrix LED LCD panel
- Pixel number: 1920x1080 (Full HD)
- Pixel pitch (RGB): 0.276 mm H/V
- Response time: 25 ms
- Contrast ratio: 3000:1
- Light density: 300 cd/m<sup>2</sup>
- Auto detects VGA to FHD (Full HD)
- Viewable angle: +- 89 deg. H/V/L/R
- Active display area: 531.36x298.89 mm H/V
  
- Multi-power supply – 115 VAC/50 Hz and 230 VAC/60 Hz + 24 VDC (125 W max)
- Weight: 11.2 kg
- Dim: 593 (W) x 384 (H) x 76.40 (D) mm

## Approved by DNV according to the latest IMO standards

- TECDIS offers full support of S-63 Ed.1.1 charts (NAVTOR, PRIMAR, UKHO AVCS, etc.)
- Additionally, TECDIS offers full support for S-63 Ed.1.0 charts, S-57 Ed.3 and Jeppesen Marine CM-93/3 and ENC.
- Full featured support for Temporary & Preliminary notices, including Jeppesen T&P Overlay. (Full AIO support coming soon)
- Updating of charts is done in minutes. Use Jeppesen Online Update Service or the NAVTOR NavSync service directly on the TECDIS itself.
- DNV approved with internet connection for automatic chart updates.
- Synchronize chart data between TECDIS units on board automatically (optional).

# Furuno dealers

## FINNMARK

Varanger Skipslektronikk  
P.O.Boks 405  
9811 Vadsø  
Tlf.: 78 95 22 99  
va-skips@online.no

A/S Radioservice  
P.O.Boks F  
9991 Båtsfjord  
Tlf.: 78 98 57 00  
batsfjord@mobildata.no

Metek AS  
P.O.Boks 153  
9770 Mehamn  
Tlf.: 78 49 71 65  
post@metek.no

Maritek A/S  
P.O.Boks 31  
9751 Honningsvåg  
Tlf.: 78 47 23 11  
maritek@maritek.no

O.M.Rønning  
P.O.Boks 490  
9615 Hammerfest  
Tlf.: 78 41 17 85  
post@omronning.no

## TROMS

Imes AS  
P.O.Boks 2008  
9265 Tromsø  
Tlf.: 77 66 46 00  
imes@imes.no

J.M.Hansen  
P.O.Boks 83  
9273 Tromsø  
Tlf.: 77 66 55 00  
firmapost@jmhansen.no

Nautik Elektronikk  
P.O.Boks 458  
9305 Finnsnes  
Tlf.: 77 84 26 60  
nautik@online.no

Harstad Elektronikk A/S  
P.O. 113  
9481 Harstad  
Tlf.: 77 04 02 00  
post@harstad-elektronikk.no

## NORDLAND

Elkjøp Bø i Vesterålen  
Vinje  
8470 Bø i Vesterålen  
Tlf.: 76 11 46 90  
aftersales.bo@elkjop.no

**MX** Larsen Elcom AS  
Storgata 45  
8430 Myre  
Tlf.: 76 13 42 50  
E-post: larsen.elcom@

**MX** HIBotech as  
Eidet 2  
8310 Kabelvåg  
Tlf.: 476 85 833  
E-post: hans.inge.normann@lofotkraft.net

**MX** Multi Elektro AS  
8380 Ramberg  
Tlf: 97 72 16 00  
E-post: post@multi-elektro.

Sortland Skipslektronik. AS  
P.O.Boks 476  
8401 Sortland  
Tlf.: 76 12 60 90  
post@skipselektronikk.com

Navy Lofoten AS, Ballstad  
Hatvikvn. 2  
8373 Ballstad  
Tlf.: 76 05 44 00  
dagligleder.ballstad@ofgu.com

Elektro Bodø AS  
Jernbanevn.85  
8037 Bodø  
Tlf.: 75 50 37 00  
maritime@elektro.no

Myre Elektronikkservice A/S  
P.O.Boks 98  
8439 Myre  
Tlf: 76 13 31 90  
firmapost@meservice.no

Arne Bjørnvold A/S  
P.O.Boks 14  
8801 Sandnessjøen  
Tlf.: 75 04 02 18  
abjoernv@online.no

## TRØNDELAG

Arne Wahl-Olsen A/S  
Strandgata 3c  
7900 Rørvik  
Tlf.: 74 36 09 90  
lars@wahlolsen.no

Argon AS  
5425 Lade  
7442 Trondheim  
Tlf.: 73 92 44 00  
firmapost@argon.no

## MØRE OG ROMSDAL

Elmarin AS  
Heinsgt. 22  
6507 Kristiansund  
Tlf.: 71 56 67 15  
janove@elmarin.no

Oddstøl Elektronikk A/S  
Hollendergt. 5-7  
6509 Kristiansund  
Tlf.: 71 56 a69 30  
firmapost@oddstol.no

Sandblost A/S  
P.O.Boks 64  
6501 Kristiansund  
Tlf.: 71 67 49 55  
post@sandblost.no

O.Øverland A/S  
P.O.Boks 1098  
6403 Molde  
Tlf.: 71 20 24 00  
post@overland.no

Marinelektronikk AS  
P.O. Boks 5534 Hatlane  
6024 Ålesund  
Tlf: 40 00 40 95  
geir@marinelektronikk.no

Florvaag Elektronikk AS  
P.O.Boks 8050  
6022 Ålesund  
Tlf: 70 14 76 06  
florvaag@florvaag.no

J. Weiberg Gulliksen AS  
P.O.Boks 5094  
6009 Ålesund  
Tlf.: 70 11 85 00  
firmapost@gulliksen.no

HG Marine Electronics AS  
6060 Hareid  
Tlf.: 70 10 13 90  
electronics@hareidgroup.com

Ulstein Power & Control A/S  
P.O.Boks 278  
6067 Ulsteinvik  
Tlf.: 70 01 38 50  
firmapost@ulsteingroup.com

Vard Electro AS  
Lorkenesgata 3  
6002 Ålesund  
Tlf: 70 31 12 00  
navcom.electro@vard.com

## SOGN OG FJORDANE

Måløy Radioforretn. AS  
P.O.Boks 54  
6701 Måløy  
Tlf.: 57 85 26 00  
radiofor@online.no

Sigurd Solberg A/S  
Fugleskjærgata 6  
6900 Florø  
Tlf.: 57 75 13 00  
post@sigurd-solberg.no

## HORDALAND

Bergen Maritim Elektro AS  
Damsgårdsgt.127  
5162 Laksvåg  
Tlf.: 55 94 76 76  
firmapost@bme-as.no

Navcom AS  
Vågsaten 22  
5160 Laksevåg  
Tlf.: 55 5a0 64 10  
navcom@navcom.no

## ROGALAND

Vico A/S  
P.O.Boks 204  
4299 Avaldsnes  
Tlf.: 52 84 66 00  
vico@vico.no

L.Larsen Elektronikk A/S  
3023 Hillevåg  
4095 Stavanger  
Tlf.: 51 88 68 68  
mail@landorlarsen.no

IKM Elektro AS  
Skvadronveien 24  
4050 Sola  
Tlf: 51 81 72 00  
ikmelektro@ikm.no

Viking Innovations AS  
Tjeltaveien 82  
4054 Tjelta  
Tlf: 916 25 724  
www.vikinginnovations.com

El-Experten A/S  
Gamle Sokndalsvn.38  
4370 Egersund  
Tlf.: 51 49 60 08  
post@el-experten.no

**MX** Brommeland Elektronikk AS  
Lindangerveien 10  
5519 Haugesund  
Tlf: 99 33 15 00  
E-post: post@brommeland.no

## VEST-AGDER

Marin Elektro A/S  
P.O.Boks 58  
4551 Farsund  
Tlf.: 38 39 19 20  
salg@marinelektro.no

AS Elektrisk Mandal  
P.O.Boks 518  
4504 Mandal  
Tlf.: 38 26 78 10  
post@aselektrisk.no

## AUST-AGDER

Elektro Skagerrak A/S  
P.O.Boks 212  
4952 Risør  
Tlf.: 37 14 39 14  
post@elektro-skagerrak.no

## VESTFOLD

IKM Instrutek AS  
Elvevn. 28  
3262 Larvik  
Tlf.: 33 16 57 00  
ikminstrutek@ikm.no

Serco AS  
Jarlsøveien 50  
3124 Tønsberg  
Tlf.: 815 56 920  
post@serco.no

## OSLO & AKERSHUS

Sjøkaptein Lein AS  
Akerhusstr. 30  
0150 Oslo  
Tlf.: 22 42 78 40  
m.lein@online.no

## ØSTFOLD

Tel-Rad A/S  
P.O.Boks 544  
1612 Fredrikstad  
Tlf.: 69 31 56 16  
tel-rad@tel-rad.no

**MX** Kun MaxSea forhandler

# **FURUNO NORGE**