

## SPECIFICATIONS

1. GENERAL
  - 1.1 Transmitting frequency 15 kHz to 200 kHz, Free-synthesize
  - 1.2 Output power 1, 2 or 3 kW rms
  - 1.3 Transmitting rate 10 to 2700 pulse/min (6 to 3000 mm range, normal mode)
  - 1.4 Transmitting mode Standard mode only
  - 1.5 Pulselength 0.05 to 5 ms
  - 1.6 Display resolution XGA (1024x768), SXGA (1280x1024), SXGA (1024x1280), Landscape XGA (1024x768), Landscape SXGA (1280x1024), Portrait SXGA (1024x1280)
2. PROCESSOR UNIT
  - 2.1 Color indication 8, 16 or 64 colors according to echo intensity
  - 2.2 Echo color Select from 5 colors
  - 2.3 Hue 7 steps (standard, Hue 1 to 5, customized)
  - 2.3 Echo display mode Single mode (high/low frequency), Dual-frequency, Zoom, User 1/2
- 2.4 Zoom display User 1/2 available to use mixture, multi-gain, tele-sounder and external sounder display
- 2.5 Depth range Bottom-lock expansion, Bottom zoom, 5 to 3000 m
- 2.6 Range shift 2000 m max.
- 2.7 Expansion range 5 to 200 m
- 2.8 Display advanced speed 6 steps (Lines/TX: Freeze, 1/4, 1/2, 1/1, 2/1, 4/1)
- 2.9 Data recording Echo display and measured data can be recorded to internal memory
- 2.10 Language Chinese, Danish, English, French, Japanese, Korean, Russian, Spanish, Norwegian

3. INTERFACE
  - 3.1 Number of port 3 ports, NMEA V1.5/2.0/3.0
  - NMEA 1 port, Ethernet 100Base-TX (HUB required)
  - LAN 1 port
  - OF 1 port, (sonde marker/sonde KP)
  - Net sonde 1 port, HDMI type-D
  - Video signal 1 port
  - External KP 1 port
  - Temperature sensor 1 port, USB2.0
  - USB (specified monitor brilliance control available)

- 3.2 Data sentences GGA, GLL, GNS, MTW, VHW, VTG
- Input DBS, DBT, DPT, MTW, TLL
- 3.3 Output proprietary sentences aft, bcd, dat, mtk

4. POWER SUPPLY
  - 4.1 Processor unit 12-24 VDC: 8.3-3.9 A
  - Rectifier (RU-T748B-2, option) 100V/110V/115/220/230 VAC, 1 phase, 50/60 Hz
  - AC/DC power supply unit 100-115/200-230 VAC, 1 phase, 50-60 Hz (PR-240, option)

5. ENVIRONMENTAL CONDITIONS
  - 5.1 Ambient temperature -15°C to +55°C
  - 5.2 Relative humidity 95% or less at +40°C
  - 5.3 Degree of protection IP22
  - 5.4 Vibration IEC 80945 Ed. 4

## EQUIPMENT LIST

- |  |                              |    |
|--|------------------------------|----|
| Standard                               | Processor Unit (FCV-1901) .. | x1 |
|  | Control Unit (FCV-1902) ..   | x1 |
| 3. Spare parts, Installation materials |                              |    |

**Option**  
 Transducer, Thru-Hull pipe, Interface Unit (FCV-1903), Ethernet HUB, Junction box, Booster box, Temperature sensor, AC/DC power supply unit, Rectifier, Installation material, Cable assembly, Cable (for transducer extension)

## Beware of similar products

All brand and product names are registered trademarks, trademarks or service marks of their respective holders.

**FURUNO ELECTRIC CO., LTD.**  
 Nishinomiya, Hyogo, Japan  
 www.furuno.com

**FURUNO S.A. INC.**  
 10000, San Diego, California, USA  
 www.furuno.com

**FURUNO (UK) LIMITED**  
 Island, Hampshire, UK

**FURUNO FRANCE S.A.S.**  
 Bordeaux-Mérignac, France  
 www.furuno.fr

**FURUNO ITALIA S.R.L.**  
 Carpi, Modena, Italy

**FURUNO ESPAÑA S.A.**  
 Madrid, Spain  
 www.furuno.es

**FURUNO DANMARK A/S**  
 Hvidovre, Denmark

**FURUNO NORGE A/S**  
 Ålesund, Norway  
 www.furuno.no

**FURUNO SWERIGE AB**  
 Västra Frölunda, Sweden

**FURUNO FINLAND OY**  
 Espoo, Finland

**FURUNO POLSKA Sp. z o.o.**  
 Gdynia, Poland

**FURUNO EURUS LLC**  
 St. Petersburg, Russian Federation  
 www.furuno.com

**FURUNO SINGAPORE**  
 Singapore

**FURUNO JUTSCHLAND GmbH**  
 Rullingen, Germany  
 www.furuno.de

**FURUNO HELLAS S.A.**  
 Piraeus, Greece

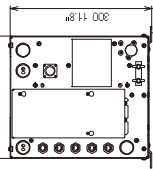
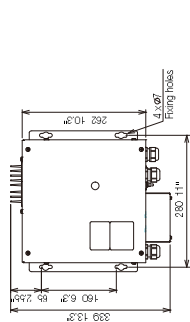
**FURUNO (CYPRIUS) LTD**  
 Limassol, Cyprus  
 www.furuno.com

**FURUNO SHANGHAI CO., LTD.**  
 Shanghai, China  
 www.furuno.com.cn

**FURUNO (JAPAN) LTD**  
 15081 SK Printed in Japan  
 Catalogue No. E-424

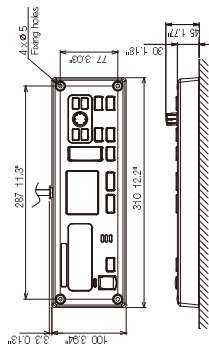
## Processor Unit FCV-1901

10.2 kg 22.5 lb

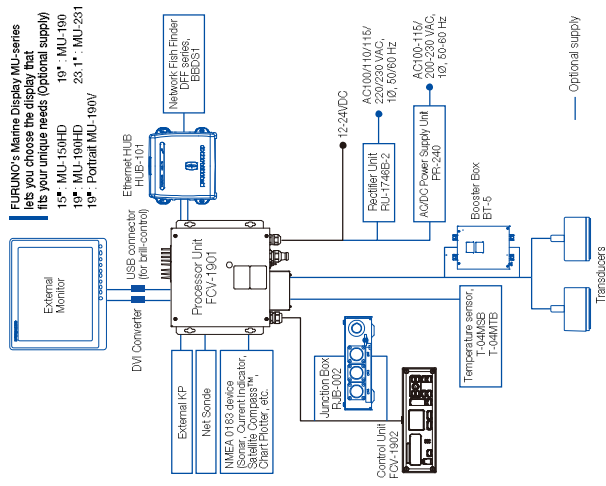


## Control Unit FCV-1902

1.1 kg 2.4 lb



## Interconnection Diagram



# FURUNO

## FISH FINDER

# FCV-1900

Model

See underwater clearly and accurately  
 with incredible high definition echoes

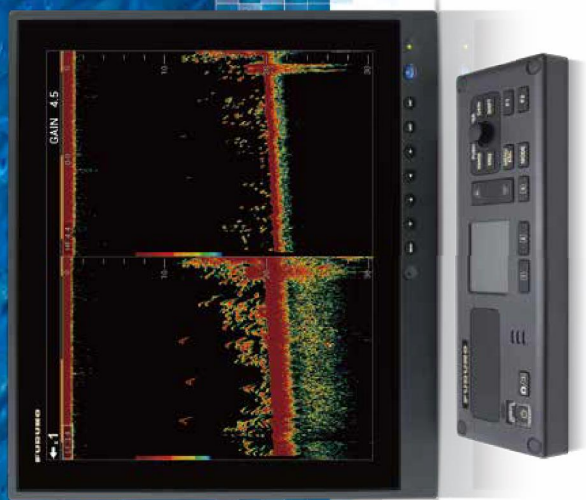


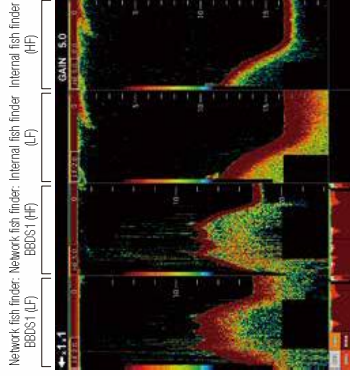
Photo: 19" Marine Display MU-190HD (Optional supply)



# Functions for improved efficiency

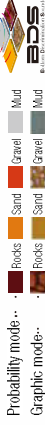
## Display up to four different frequencies

Display up to four different frequencies together in a compact and easy way, by connecting a required network fish finder. Since there is no need to install additional displays, this system is especially useful for small vessels.



Connect a BBDS1 network fish finder for bottom discrimination function

The bottom discrimination function indicates whether the bottom is composed mainly of rocks, gravel, sand or mud. This information aids in identifying fish species, which can increase efficiency.

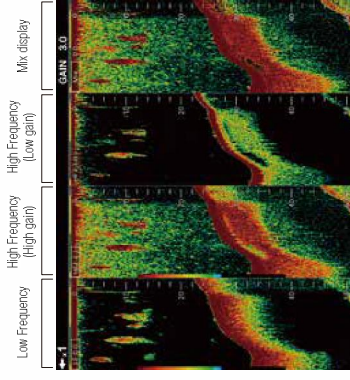


## Scroll back function

With the press of a button you can activate the scroll back function to instantly review past echoes. Up to two previous screens can be viewed.

## Simultaneous gain setting for increased visibility

Display two different gain settings simultaneously for increased visibility in changing water conditions and when changing vessel speed.



## FURUNO Free Synthesizer transceiver for adjustable operating frequency

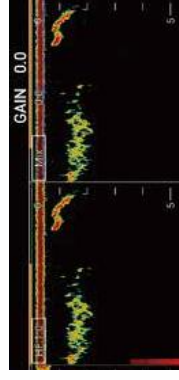
Retrfitting is made easy. With FFS technology, you can easily replace an FCV-1200L processor unit while utilizing the same transceiver for convenient installation.

## Improved control unit for simple and intuitive operation

The control unit features a water resistant touch pad that works even when wearing rubber gloves. You can use the touch pad for setting up VPM and TLL in an instant.

## Zero Line Rejection

Observe clear echoes from just 3 meters below your vessel with Zero Line Rejection, allowing you to better analyze the water column from near to far.



## Capture and review videos and screenshots\*

Now you can capture screenshots and video when dropping your net or when searching for fish. Captured screenshots and video display position\* and time of capture, for simple review. Improve your fishing by comparing fish finder echoes with your resulting catches.

\*GPS input required. \*Feature coming soon.



# FISH FINDER FCV-1900

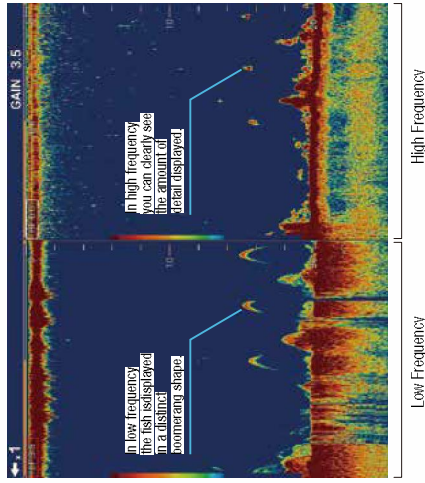
Model

Photo: 19" Marine Display MU-190HD  
(Marine Display and Hanger are optional supply)

## Increased transmission rate for more details

With a transmission rate that has been increased by up to 1.4 times (200m range), FCV-1900 ensures excellent target separation and clarity.

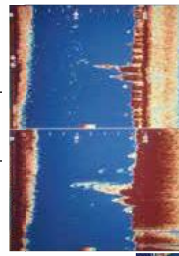
Individual fish



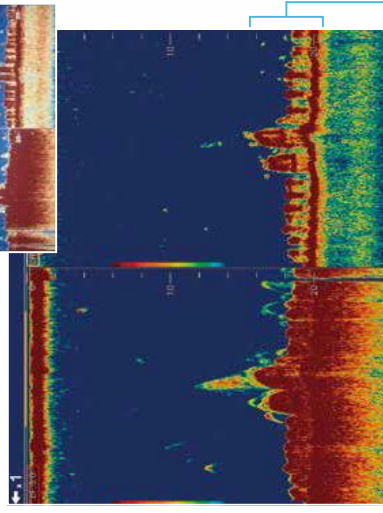
In low frequency, the fish is displayed in a distinct manner and shape.

In high frequency, you can clearly see the amount of total displayed.

Same scene captured with previous model



Fish reef



Low Frequency

High Frequency

See fish reefs in greater detail

You can find more information and media by searching for FCV-1900 on FURUNO.com

FCV-1900

## Upgrade to FCV-1900B Hi-Res Fish Finder or FCV-1900G Fish size indicator

By purchasing and installing a software license, you can upgrade your FCV-1900 model to a FCV-1900B Hi-Res Fish Finder\* or a FCV-1900G Fish Size Indicator\*, both utilizing the latest TrueEcho CHIPP™ technology. FCV-1900G offers a precise fish size histogram for accurate estimation of fish size and density of schools of fish. With fish size histogram, targets can be properly evaluated, spelling increased efficiency and profitability. For further details, please contact your local FURUNO national distributor.

\*TrueEcho CHIPP™ compatible transducer required.