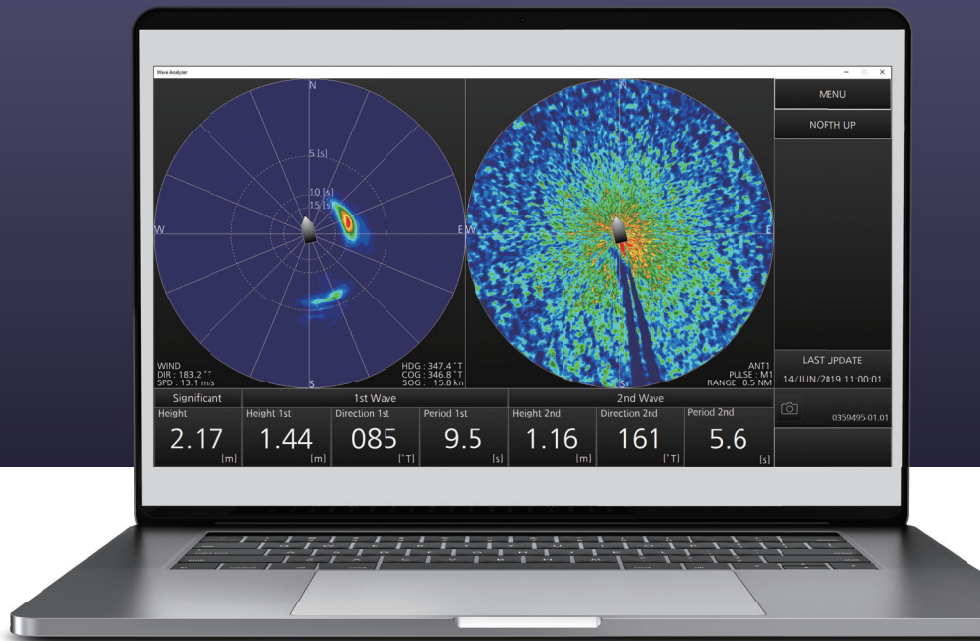


# WAVE ANALYZER

Model: WV-100

**Support To Visual Observation**

*with accurate digitized wave information*





# The power of digitized information to support visual observation.

## Economical and safe navigation

Leveraging the performance of the FAR-2xx8 and FAR-3xx0 Radars, the Wave Analyzer WV-100 allows real-time monitoring and analysis of wave echoes and ensures safety at sea even at night.

Finally, data sharing between ship and shore and between vessels is available for quick adjustment, economical route planning, and efficient traffic management around ports, where monitoring of sea conditions is required to guarantee the safety of all ships.

\*As the Wave Analyzer is a computer-based program, it does not affect the performance of the Radar system.

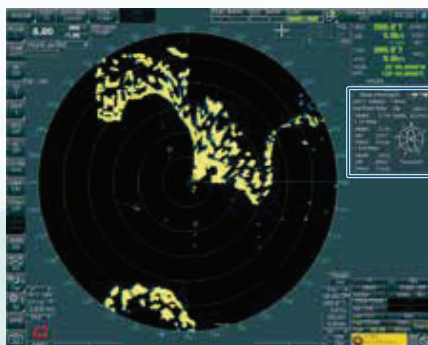
### ► World's First Wave Analyzer/S-band antenna compatibility

Possible to switch X-Band, S-Band and Solid State antennas according to weather conditions.



### ► Display wave data on the Radar monitor

The information can be displayed on both the PC screen and the Radar screen.



Wave Information		←	→
ANT-1 X-BAND	▲ Wind		
Significant Wave	DIR 324.3°		
Height 1.7 m	Speed 22.2 m/s		
▲ 1st Wave			
Height 1.2 m			
DIR 122.2°			
Period 9.6 sec			
▲ 2nd Wave			
Height 0.8 m			
DIR 039.2°			
Period 9.4 sec			



True-North

### ► Automatic adjustment function

It is the first time that a Wave Analyzer incorporates an automatic adjustment function that frees the user from calibrating the Wave Analyzer following the installation.

In addition, the influence of a sudden sea condition change is minimal and does not affect the quality and accuracy of the wave information obtained.

### ► Real-time wave data output

Via serial transmission, data can be output to any external compatible system (Automated weather report system and Dynamic position system .etc).

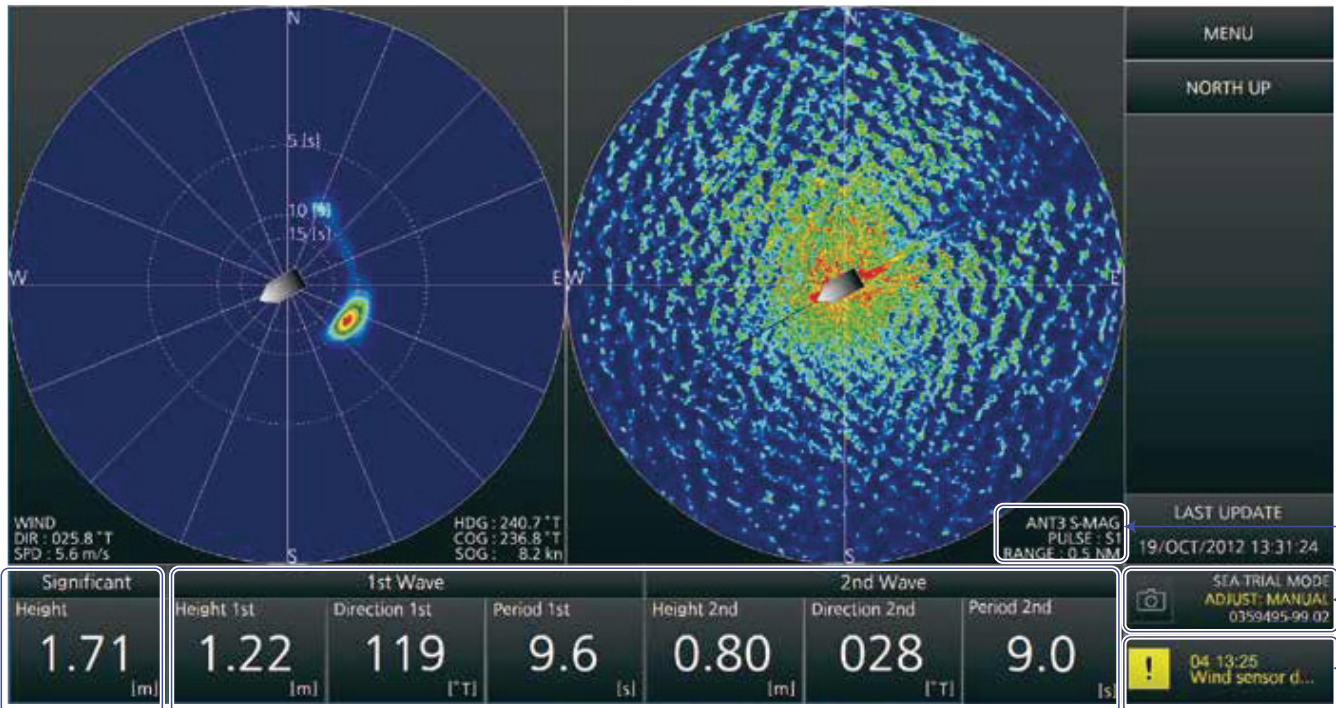






## Clear and intuitive readings

Displays wave data, echo, and system information on a PC monitor.



### Significant wave height

The significant wave height is a statistical value obtained by averaging the height of the one-third highest waves when observing the specified area.

### [1st Wave] [2nd Wave]

Among the observed waves, the two most outstanding waves are selected and assigned as [1st Wave] and [2nd Wave] for reference. There is no distinction made between wind waves and swells for this selection.

### Radar information

ANT3 S-MAG ①  
PULSE : S1 ②  
RANGE : 0.5 NM ③

- ① Antenna ID, Band width, Transceiver type
- ② Pulse width
- ③ Display range

### System information box

SEA-TRIAL MODE ①  
ADJUST: MANUAL ②  
0359495-99.02 ③

- ① Shown in the sea-trial mode. (No indication in the normal mode.)
- ② Shown in yellow when setting the wave height analyzing mode to Manual. (No indication for Auto mode.)
- ③ Programming version NO. this software.

### Camera icon

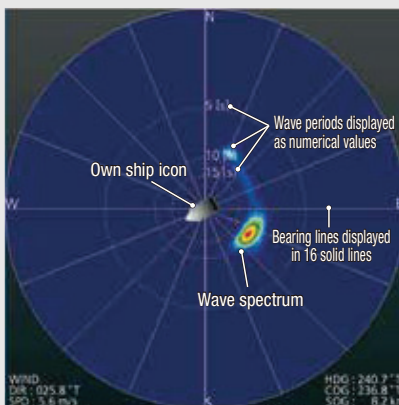
Takes a screenshot.

### Alert information box

Click the alert icon to display the [Alert Status] screen.

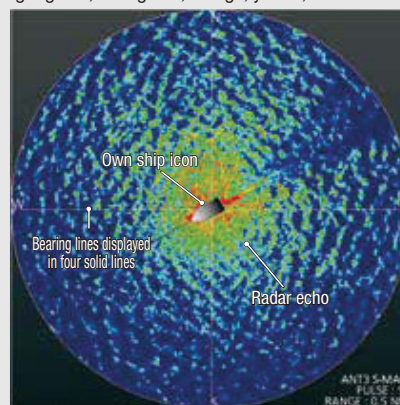
### Wave spectrum display

The Color of the wave spectrum indicates the relative intensity of the wave spectrum display.



### Radar echo display

The absolute intensity of the radar reflection from the wave increases in order of dark blue, light blue, light green, dark green, orange, yellow, red.



**PRODUCT NAME** Wave Analyzer

**MEASURING RANGE**

- 1. Wave height 0.10 to 15.0 m
- 2. Wave period 4.00 to 16.00 s
- 3. Wave direction 0.00 to 359.99°
- 4. Wave component 2 max.
- 5. Bearing -140 to +140° (from the bow)
- 6. Distance 150 to 1,200 m

**SEA WEATHER CONDITIONS**

- 1. Sea state code 3 minimum  
(wave height: 0.5 m or above)\*
- 2. Beaufort scale 3 minimum  
(wind speed: 3.4 m/s or above)\*
- 3. Sea Depth 0.5 times or more of the measured wavelength

\*The measurement may be lowered when the conditions are not enough.

**MONITOR (USER SUPPLY)**

- 1. Display resolution SXGA/UXGA/FHD
- 2. Language English

**DATA INPUT / OUTPUT**

- 1. Data sentence
  - LAN (Input) MWV
  - PFEC (Output) RAwv1, RAwv2

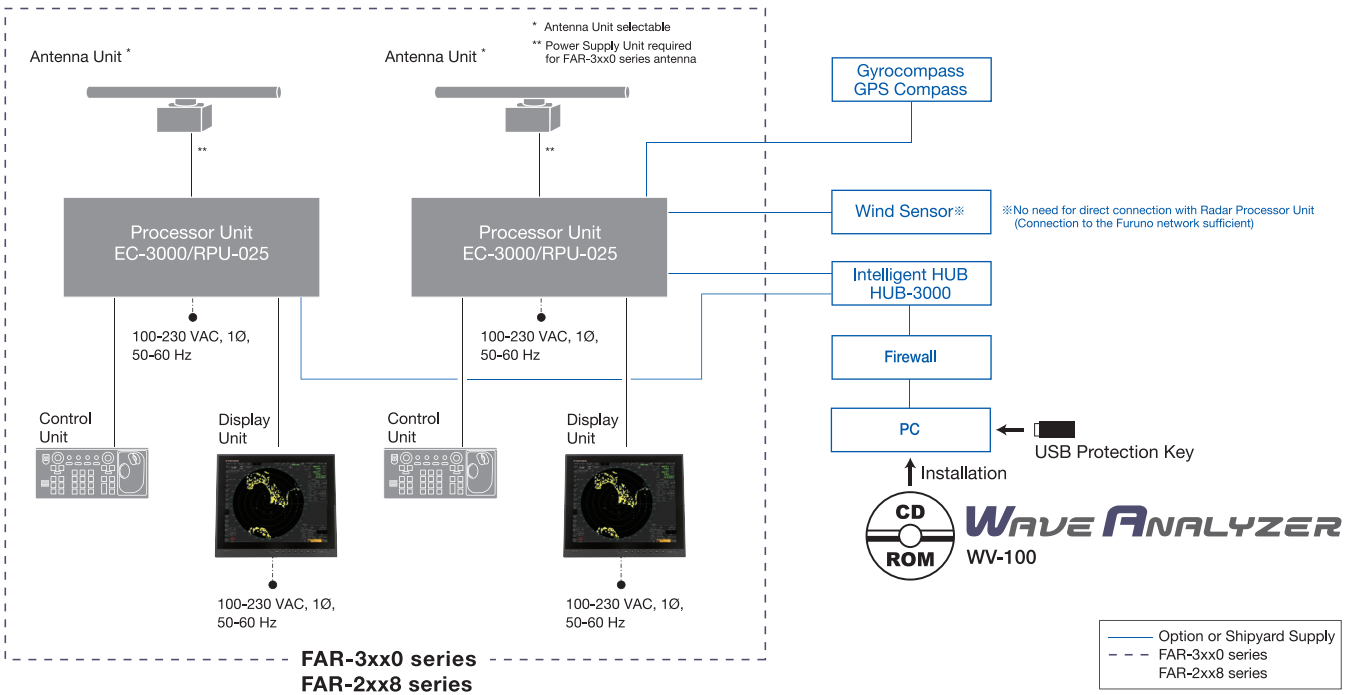
**SYSTEM REQUIREMENT**

- 1. OS Windows10 Pro/Home
- 2. CPU Intel Corei5 or later
- 3. GPU NVIDIA GeForce GTX1050, 384 cores, VRAM 2GB or more
- 4. SSD/HDD 128GB or more
- 5. Memory capacity 4GB or more
- 6. Interface
  - LAN:1port -Ethernet 100Base-TX
  - RS-232C:1port (USB/RS-232C converter available)
  - USB:2port (for dongle and serial communication)

**EQUIPMENT LIST**

- 1. CD-ROM (Wave Analyzer and Operation Manual)
- 2. USB Protection Key
- 3. Installation Manual

**INTERCONNECTION DIAGRAM** WV-100



Beware of similar products

All brand and product names are registered trademarks, trademarks or service marks of their respective holders.

SPECIFICATIONS SUBJECT TO CHANGE WITHOUT NOTICE

**FURUNO ELECTRIC CO., LTD.**  
Japan | www.furuno.com  
**FURUNO U.S.A., INC.**  
U.S.A. | www.furunousa.com  
**FURUNO PANAMA S.A.**  
Republic of Panama | www.furuno.com.pa  
**FURUNO (UK) LIMITED**  
U.K. | www.furuno.co.uk  
**FURUNO NORGE A/S**  
Norway | www.furuno.no

**FURUNO DANMARK A/S**  
Denmark | www.furuno.dk  
**FURUNO SVERIGE AB**  
Sweden | www.furuno.se  
**FURUNO FINLAND OY**  
Finland | www.furuno.fi  
**FURUNO POLSKA Sp. z o.o.**  
Poland | www.furuno.pl  
**FURUNO DEUTSCHLAND GmbH**  
Germany | www.furuno.de

**FURUNO FRANCE S.A.S.**  
France | www.furuno.fr  
**FURUNO ESPAÑA S.A.**  
Spain | www.furuno.es  
**FURUNO ITALIA S.R.L.**  
Italy | www.furuno.it  
**FURUNO HELLAS S.A.**  
Greece | www.furuno.gr  
**FURUNO (CYPRUS) LTD**  
Cyprus | www.furuno.com.cy

**FURUNO EURUS LLC**  
Russian Federation | www.furuno.ru  
**FURUNO SHANGHAI CO., LTD.**  
China | www.furuno.com/cn  
**FURUNO CHINA CO., LTD.**  
Hong Kong | www.furuno.com/cn  
**FURUNO KOREA CO., LTD**  
Korea  
**FURUNO SINGAPORE**  
Singapore | www.furuno.sg

**PT FURUNO ELECTRIC INDONESIA**  
Indonesia | www.furuno.id  
**FURUNO ELECTRIC (MALAYSIA) SND. BHD.**  
Malaysia | www.furuno.my